



PRESSOSTATO **SERIE PS** PRESSURE SWITCH **PS SERIES**

Descrizione / Description

Compact device used in heating system boiler to check minimum water pressure.

Max static pressure	6 bar
Fixing working pressure	0.5 bar
Custom calibration	
Hysteresis	> 0,1 bar
Maximum overload pressure	> 10 bar
Ambient temperature	-20°C ÷ 60°C
Water temperature	< 90°C
Minimum contact current	5mA @ 5...24 V
Contact resistance	100 mOhms max.
Terminal connection	6.3 x 0.8 mm
Hydraulic inlet (plastic)	See connection pag. 6-7
Protection Class	IP 00
Weight	~19 grammi / grams

Omologazioni / Approvals

- EN60730-1, EN60730-2-6, EN60730-1:2016/A1:2019.
- Tutti i nostri prodotti sono conformi alla direttiva europea 2002/95/EC (RoHS).
All our products conform to the 2002/95/EC European directive (RoHS).



Stoccaggio / Storage

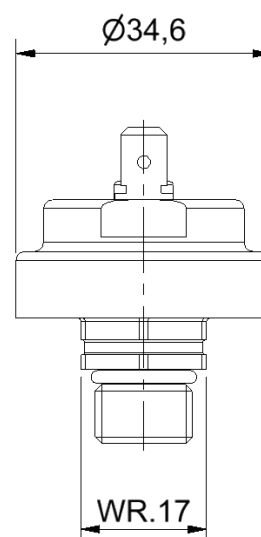
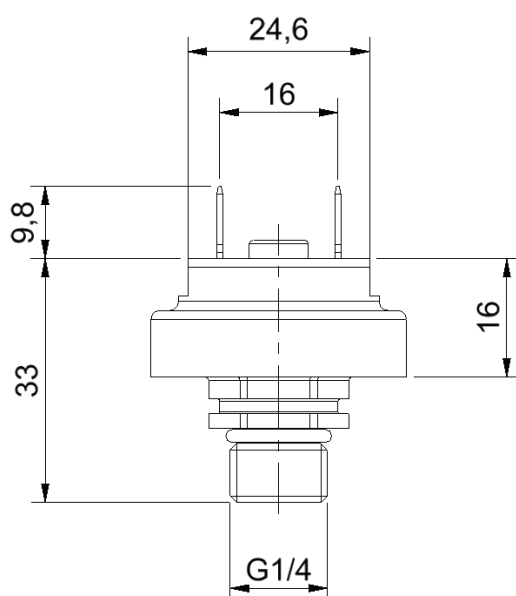
- Evitare che il pressostato venga a contatto con polveri.
Avoid the transducer coming into contact with powders.
- Non immagazzinare in luoghi con umidità condensata.
Do not store in locations with humidity condensation.
- Temperatura di stoccaggio / storage temperature -25°C

Codifica / Code scheme

Esempio / Example:

PSC B 05 NO 00

1 Series	2 Type	3 Connection	4 Calibration	5 Microswitch Circuit	6 Custom
PS	C - Heating I - Industrial application A - Foodcontact	See SP series Code scheme	XX	NO - Normally Open	00 - Standard



Pressure switch with Hydraulic Connection - John Guest

WATER TREATMENT



- Feature:
- Food contact material
 - High hysteresis (The high hysteresis is a necessary feature for stable operation in automatic systems)
 - Long working life and small dimensions
 - Male and Female connection

Pressure switch with Hydraulic Connection - Gas thread and Adjustable connection

HVAC



PS SERIES

SP SERIES



- Feature:
- Male and Female Gas thread (also with brass adapter) or adjustable connection
 - Different configurations: Faston (COM+NO/NC - COM+NC+NO), vertical fastons, RAST 5, RAST 2.5 (with cover) and soldered wire with coverage
 - Long working life and small dimensions
 - High and Low pressure range

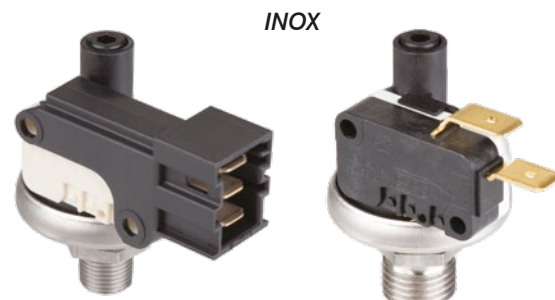
- Feature:
- Compact device
 - Fixing working pressure (falling)
 - monitor minimum water pressure in the secondary circuits.

Pressure switch with Hydraulic Connection - Metallic body

STEAM - COFFEE - INDUSTRIAL

BRASS

INOX



- Feature:
- Heavy duty industrial applications
 - High pressure
 - Long working life and small dimensions